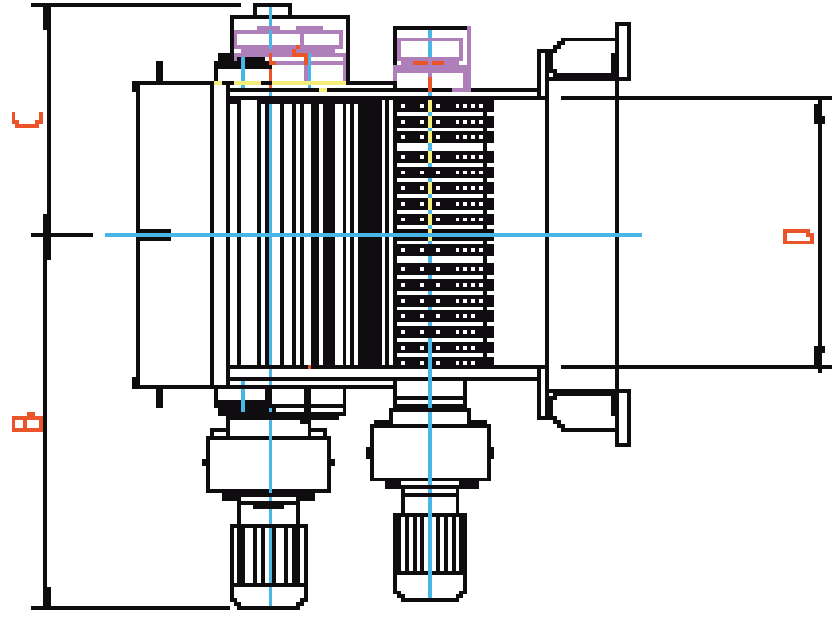
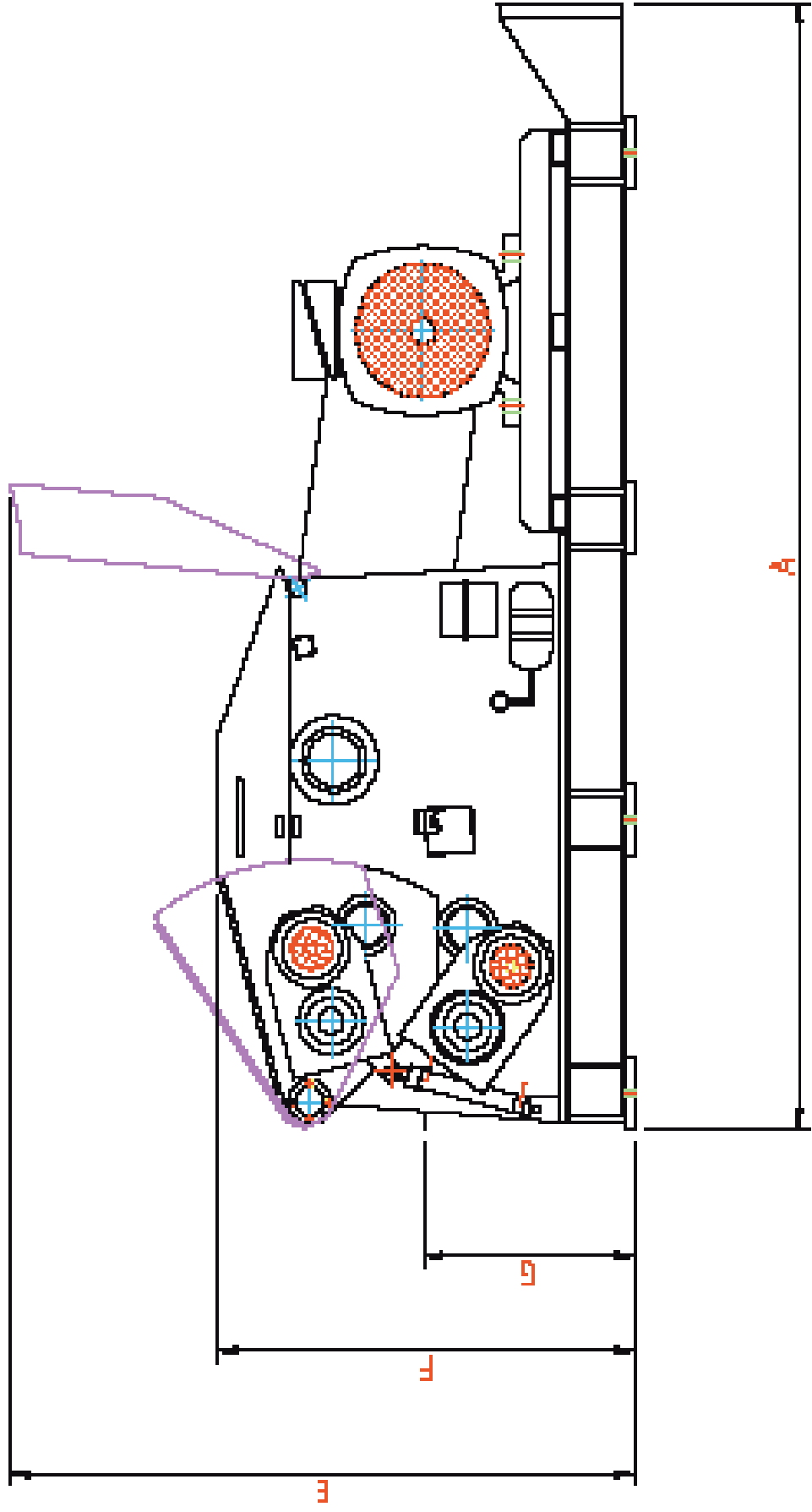
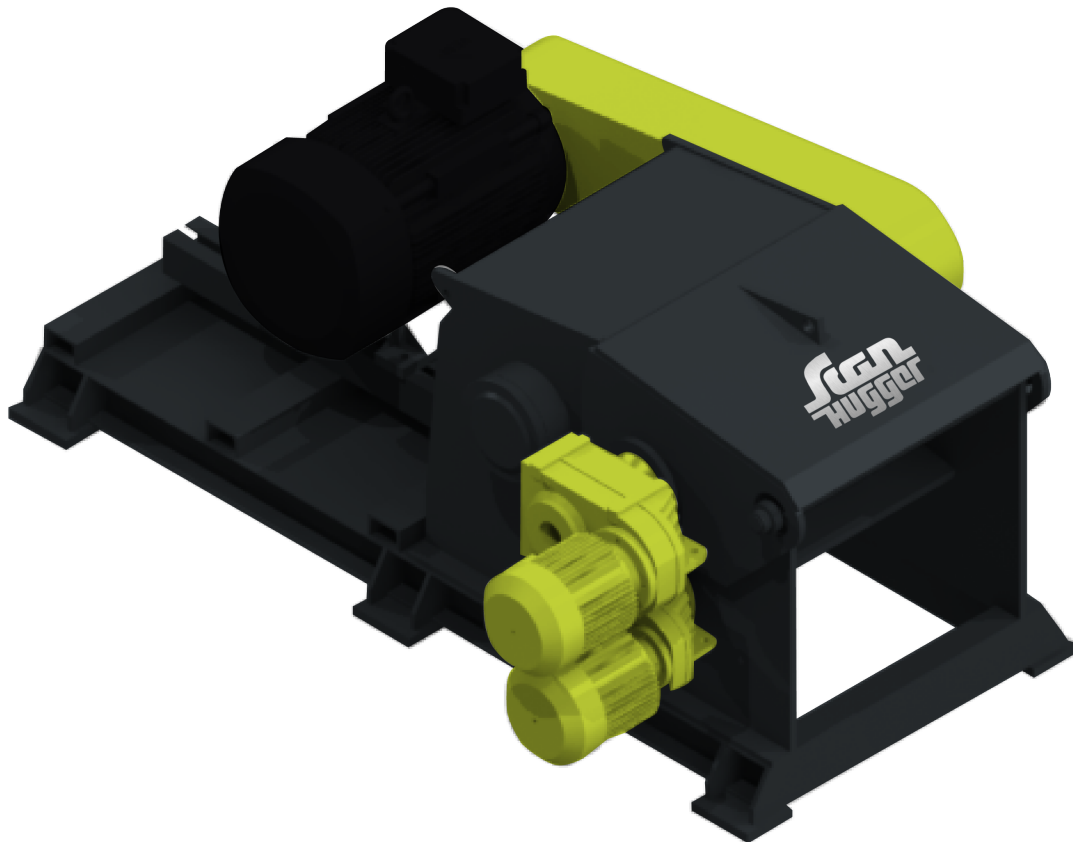


Dimensions in mm / inch		HT 75/60/4
A		3730 / 147
B		1046 / 41
C		642 / 25
D		752 / 29.6
E		2068 / 81.4
F		1376 / 54.2
G		696 / 27.4



# Scanhugger HT 75/60/4



The Scanhugger HT 75/60/4 wood chipper is mounted with a solid steel drum rotor designed to produce the requested chip size. The straight knives are mounted with a special wedge system that lock and secure the knives in the rotor. This system is ideal for shredding short or long lengths of solid waste wood, from the timber sizing and wood processing industry in order to produce a defined homogeneous wood chip.

INFEED SIZE

**180 x 730 mm**

INFEED SPEED

**25 - 40 m / min**

ROTOR SPEED

**900 RPM**

ROTOR DIAMETER

**650 mm**

CHIP SIZE

**15 - 35 mm**

MAIN MOTOR

**75 - 110 kW**

WEIGHT

**5900 kg**