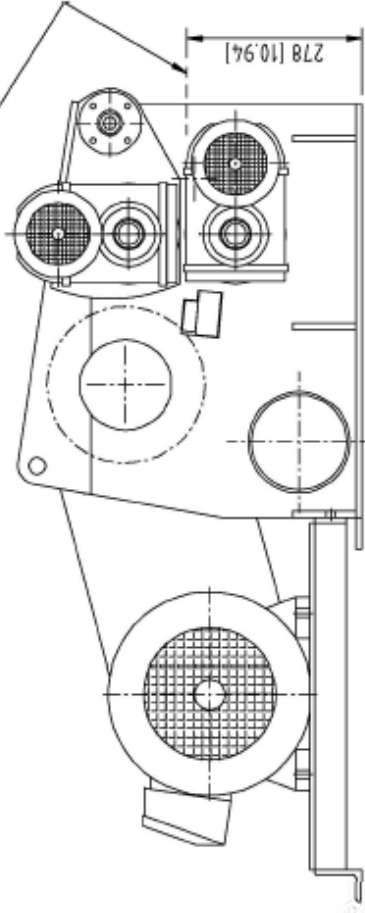
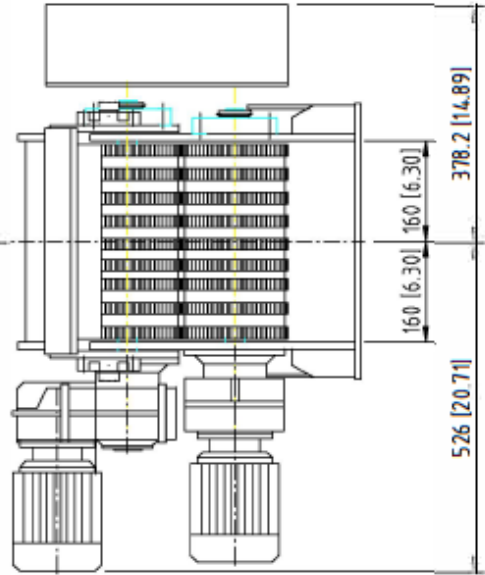


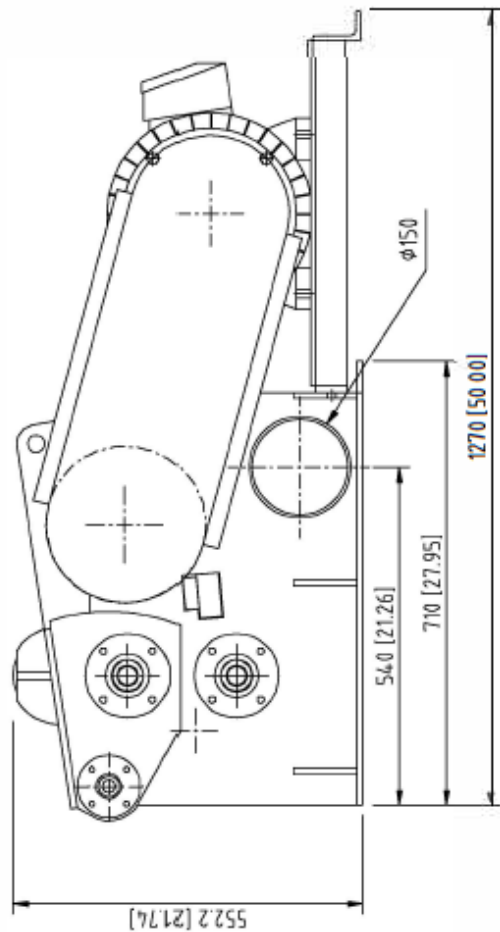
INFEED HEIGHT



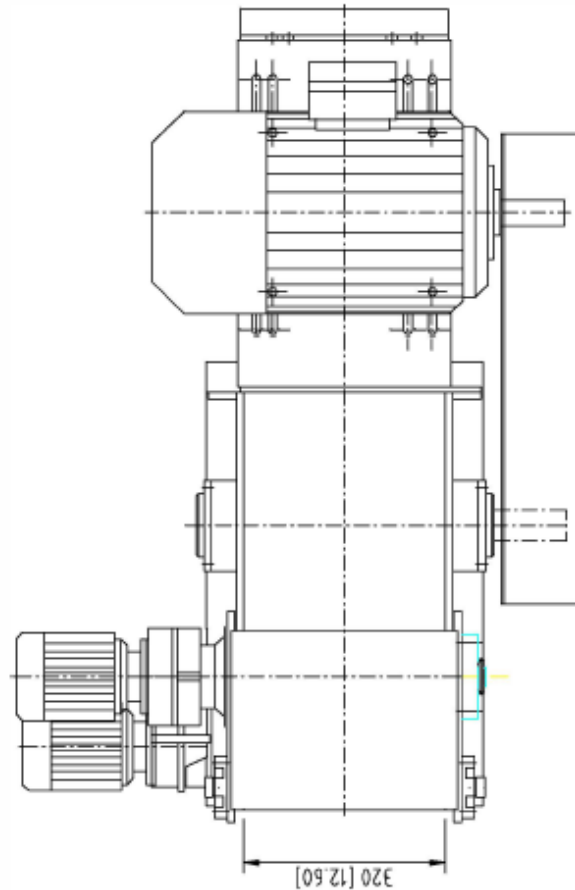
LEFT SIDE WIEW



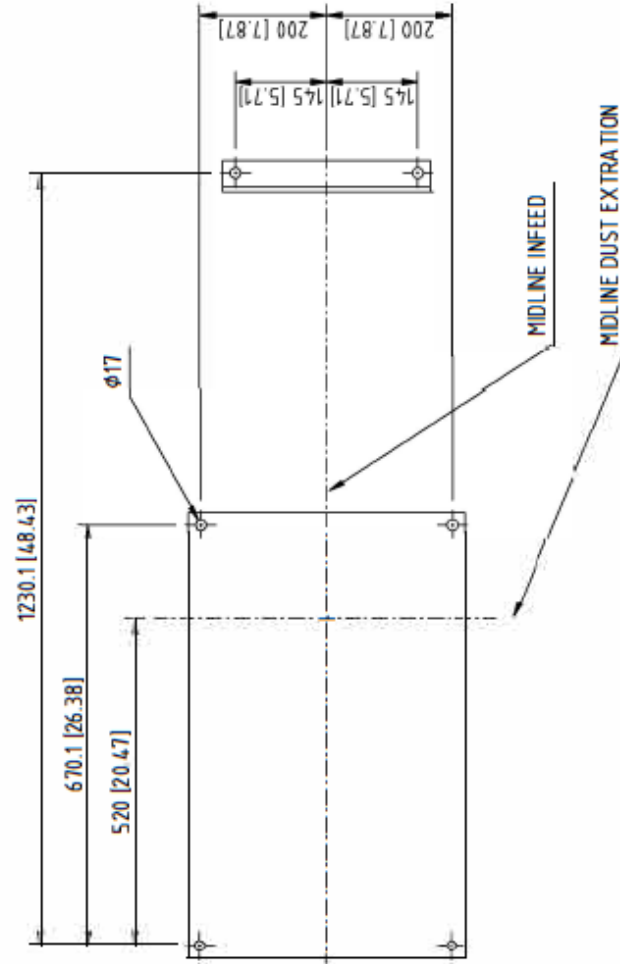
FRONT WIEW



RIGHT SIDE WIEW



TOP WIEW



FOOTPRINT

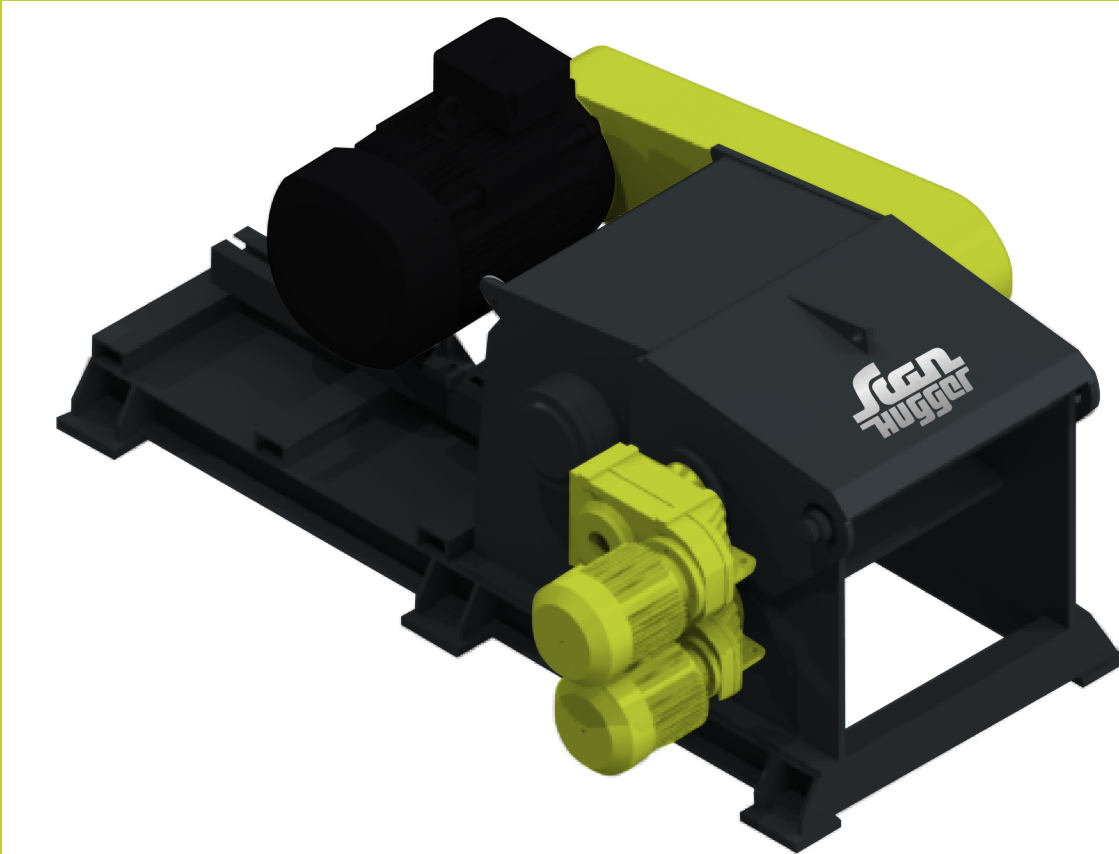
PREPARED FOR:
 MAIN MOTOR:
 GEARED MOTORS:
 CONVEYOR:
 DUST EXTRACTION:

STANDARD CONFIGURATION FOR HT 30/25/2
 INFEED GEARMOTORS MOUNTED ON LEFT MACHINE SIDE
 MAIN MOTOR MOUNTED ON RIGHT MACHINE SIDE
 DRAWING SHOWS 2561-20HP MAIN MOTOR
 DUST EXTRACTION MOUNTED ON LEFT/RIGHT SIDE OF MACHINE
 MACHINE PREPARED FOR BAND- OR VIBRATING CONVEYOR

TECHNICAL ALTERATIONS RESERVED

| | | | | | | |
|--|-------------|-------------------|---------------|------|----------------------------|------------------------|
| Posnr Kortnr | Mjøl Snr | Benævnelse Snr | Formål | Stad | Erstatnings af Ersatner | Erstatnings af Date |
| Titel | | | Tegningnummer | | | |
| <p>TAF 8724 3111 TAF 8724 3175</p> | | | | | | |
| <p>denne tegning må ikke kopieres eller på nogen anden måde gøres tilgængelig for tredjepart this drawing is not to be copied, printed or to be available to any unauthorized person without our specific permission</p> | | | | | | |

Scanhugger HT 30/25/2



The Scanhugger HT 30/25/2 is the smallest horizontally feed chipper in the line. It is ideally suited for cutting rib edgings and off-cuts to a precise chip from a single line rip. The chipper can be placed in the factory at the source of waste operating in-line with a straight- or gang rib saw, it continuously reduces the waste produced and eliminates the handling of slabs and edgings.

INFEED SIZE

60 x 300 mm

INFEED SPEED

16 m / min

ROTOR SPEED

1100 RPM

ROTOR DIAMETER

250 mm

CHIP SIZE

10 mm

MAIN MOTOR

15 - 18.5 kW

WEIGHT

550 kg