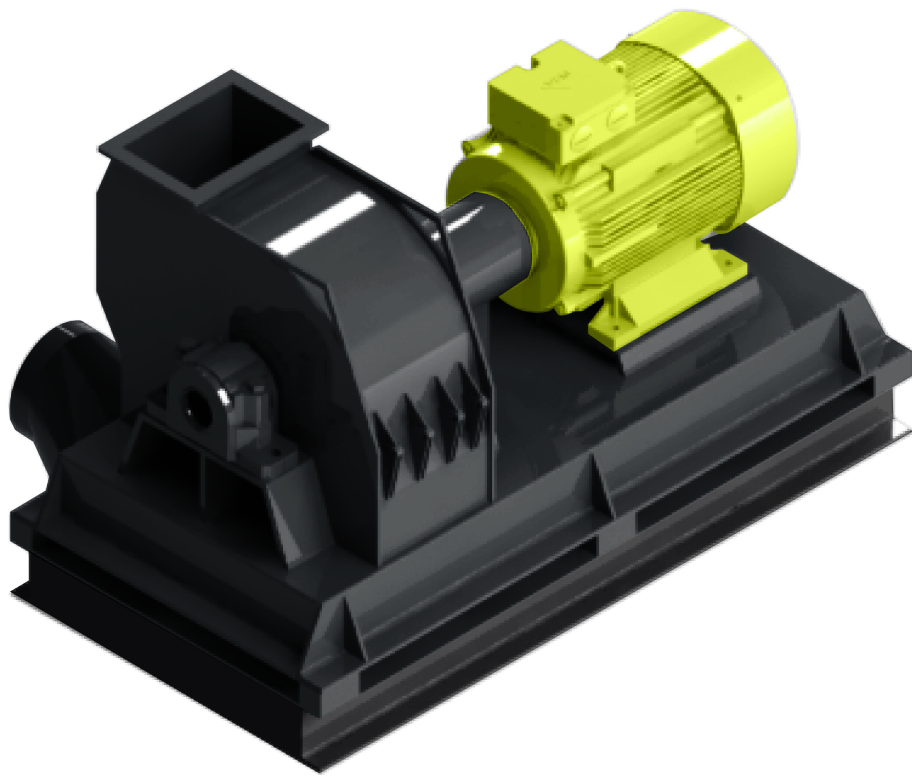


Scanhugger HM 2000 - 5000



INFEED DIAMETER

150 x 250 mm

MAIN MOTOR

22 - 110 kW

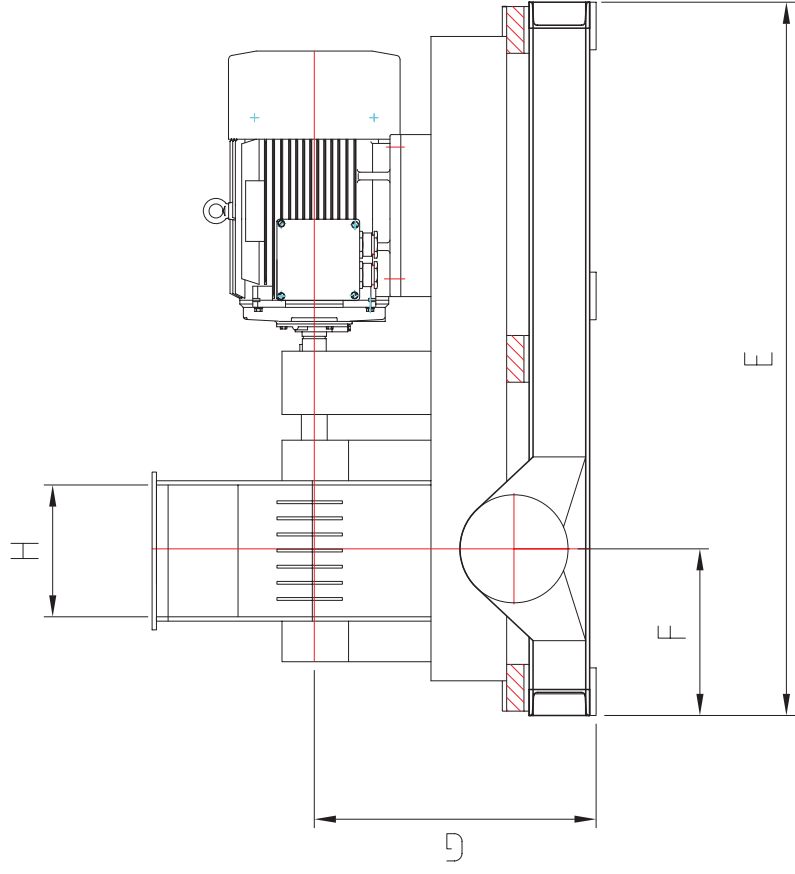
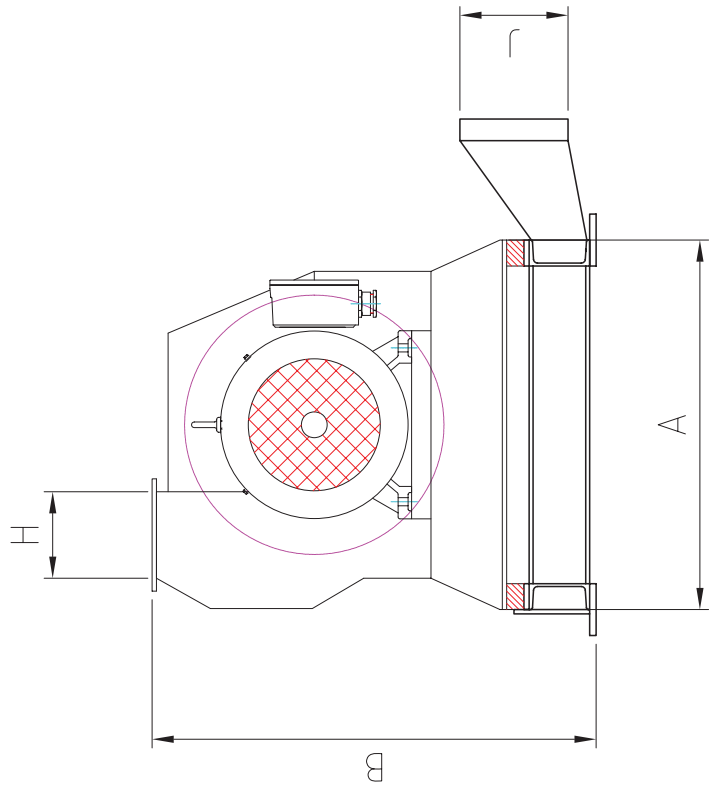
ROTOR DIAMETER

3000 mm

CAPACITY

800 - 5000 kg/h

The HM industrial hammermill is designed to reduce coarse chips of solid wood, particle board and MDF to a defined particle size. Depending on the material to be processed and the particle size of the final product, the machine can be mounted with different screen and hammer combinations.



TECHNICAL ALTERATIONS RESERVED

	HM2000	HM3000	HM4000	HM5000
A	860	860	860	860
B	1017	1017	1067	1067
E	1350	1650	2000	2000
F	300	350	450	450
G	652	652	702	702
H	200X205	200X305	200X405	200X505
J	Ø200	Ø 250	Ø300	Ø300