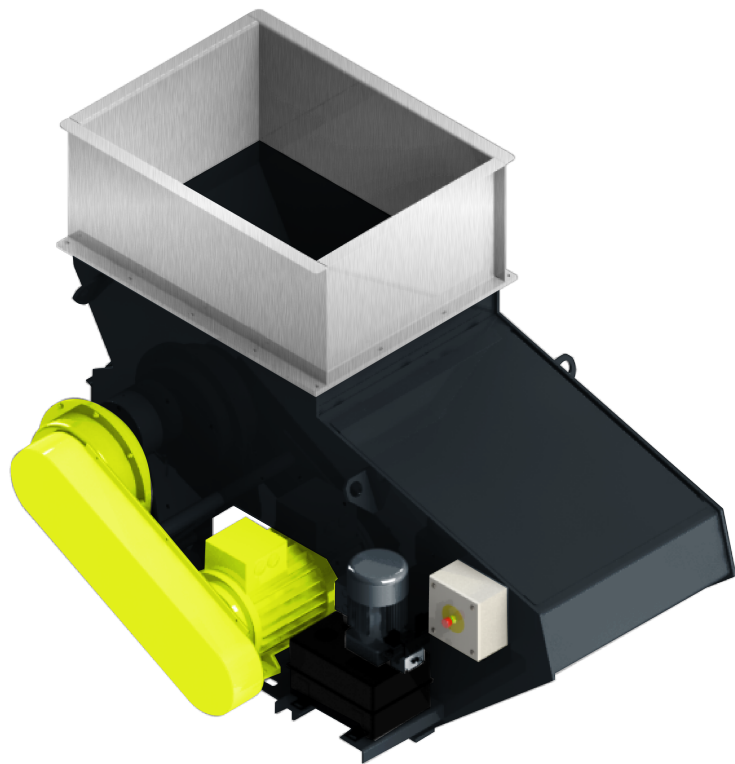


TECHNICAL ALTERATIONS RESERVED

# Scanhugger HL 5/22/25



Scanhugger HL 5/22/25 is an all-round shredder capable of shredding up to 6000 kg/hour. The shredder is designed all types of wood waste, ranging from hard- and softwood, trim blocks, particleboard, MDF, furniture parts, paper, and cardboard. Depending on the desired chip quality, the machine can be mounted with two different rotor types and various screen sizes.

INFEED SIZE

**2230 x 2490 mm**

ROTOR SPEED

**80 RPM**

SOUND LEVEL

**86.5 dB**

MAIN MOTOR

**90 - 110 kW**

CHIP SIZE

**50 - 250 mm**

CAPACITY

**2000 - 12000 kg/h \***

WEIGHT

**8300 kg**

\* The capacity depends on different factors like: Density and humidity of the material, load factor, size of the material, motor size, size of screen holes etc.