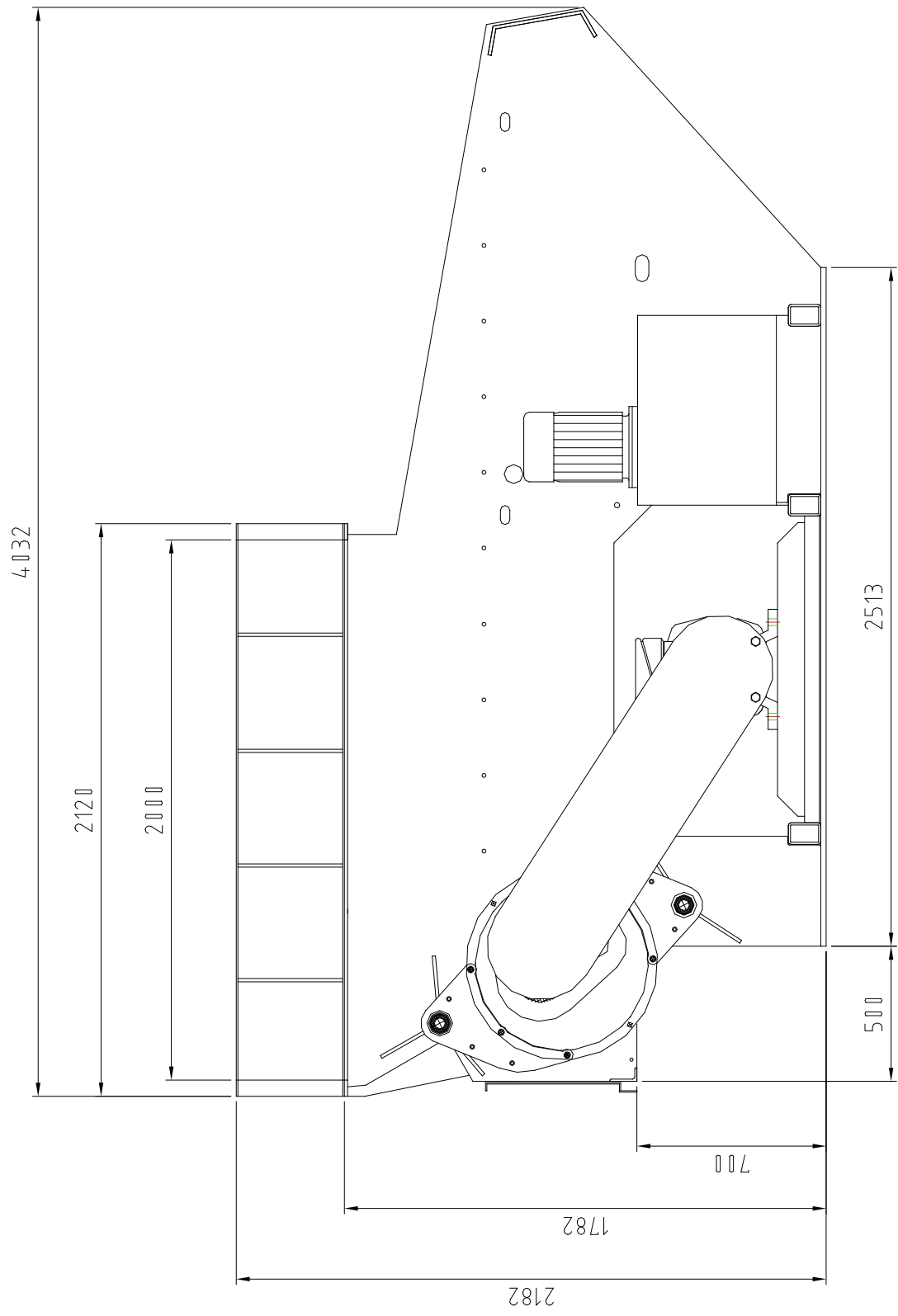
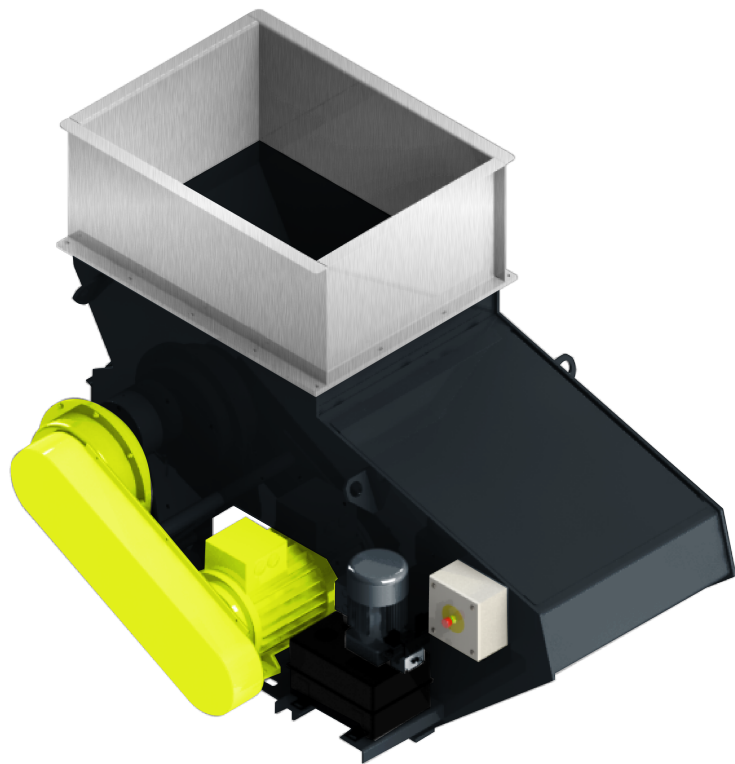


TECHNICAL ALTERATIONS



Scanhugger HL 4/18/20



Scanhugger HL 4/18/20 is an all-round shredder capable of shredding up to 5000 kg/hour. The shredder is designed all types of wood waste, ranging from hard- and softwood, trim blocks, particleboard, MDF, furniture parts, paper, and cardboard. Depending on the desired chip quality, the machine can be mounted with two different rotor types and various screen sizes.

INFEED SIZE

1828 x 2000 mm

ROTOR SPEED

80 RPM

SOUND LEVEL

86.5 dB

MAIN MOTOR

55 - 90 kW

CHIP SIZE

30 - 200 mm

CAPACITY

1500 - 7500 kg/h *

WEIGHT

7000 kg

* The capacity depends on different factors like: Density and humidity of the material, load factor, size of the material, motor size, size of screen holes etc.