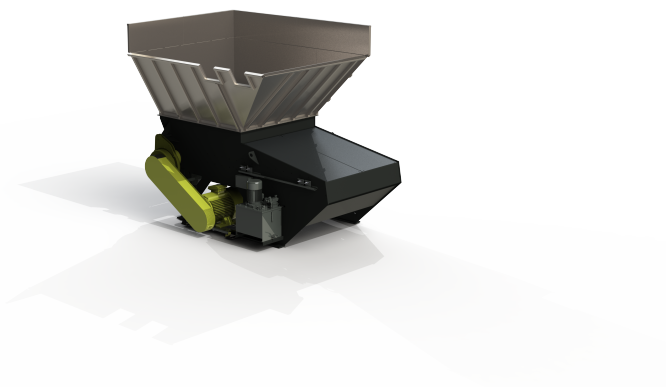


# Scanhugger HL 4/14/13



The Scanhugger HL 4/14/13 is a cost-effective shredder with an output of up to 1800 kg/hour. The shredder is designed for a large range of wood waste, ranging from hard- and softwood, trim blocks, particleboard, MDF, furniture parts, paper, and cardboard.

INFEED SIZE

1253 x 1600 mm

ROTOR SPEED

80 RPM

CHIP SIZE

20 - 50 mm

SOUND LEVEL

86.5 dB

CAPACITY

500 - 3000 kg/h \*

MAIN MOTOR

37 - 75 kW

WEIGHT

3400 kg

\* The capacity depends on different factors like: Density and humidity of the material, load factor, size of the material, motor size, size of screen holes etc.