

Scanhugger HK 55/10



Scanhugger HK-Guillotine is designed to chop wood waste without the attendance of an operator. With a small footprint and low operation noise, makes it ideally suited for locating in the factory right at the source of the waste. Operating inline with a gang saw, a straight-line rip saw or panel saw. Using a closed-looped hydraulic system, the knife is continuously cycling for optimal output. The cut length is set by an adjustable gate.

INFEED HEIGHT/WIDTH

550 x 80 mm

KNIFE CYCLE

15 - 25 per min

INFEED SPEED

6 - 12 m/min

HYDRAULIC MOTOR

15 - 22 kW

CUTTING LENGTH

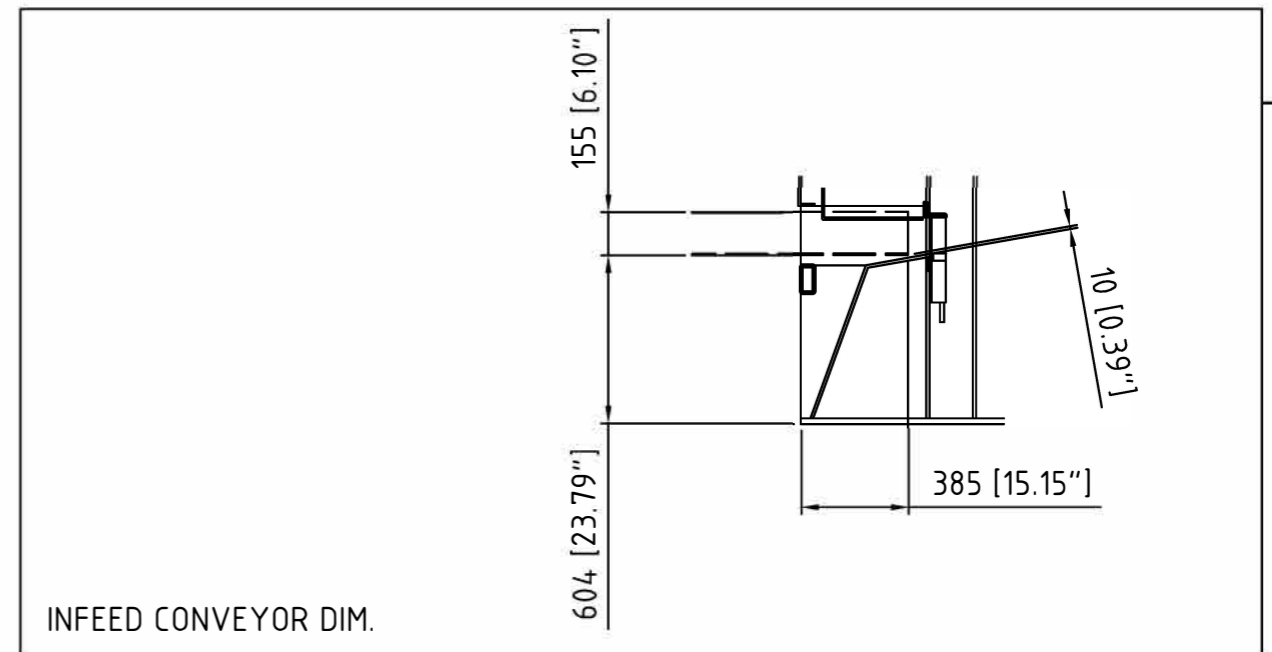
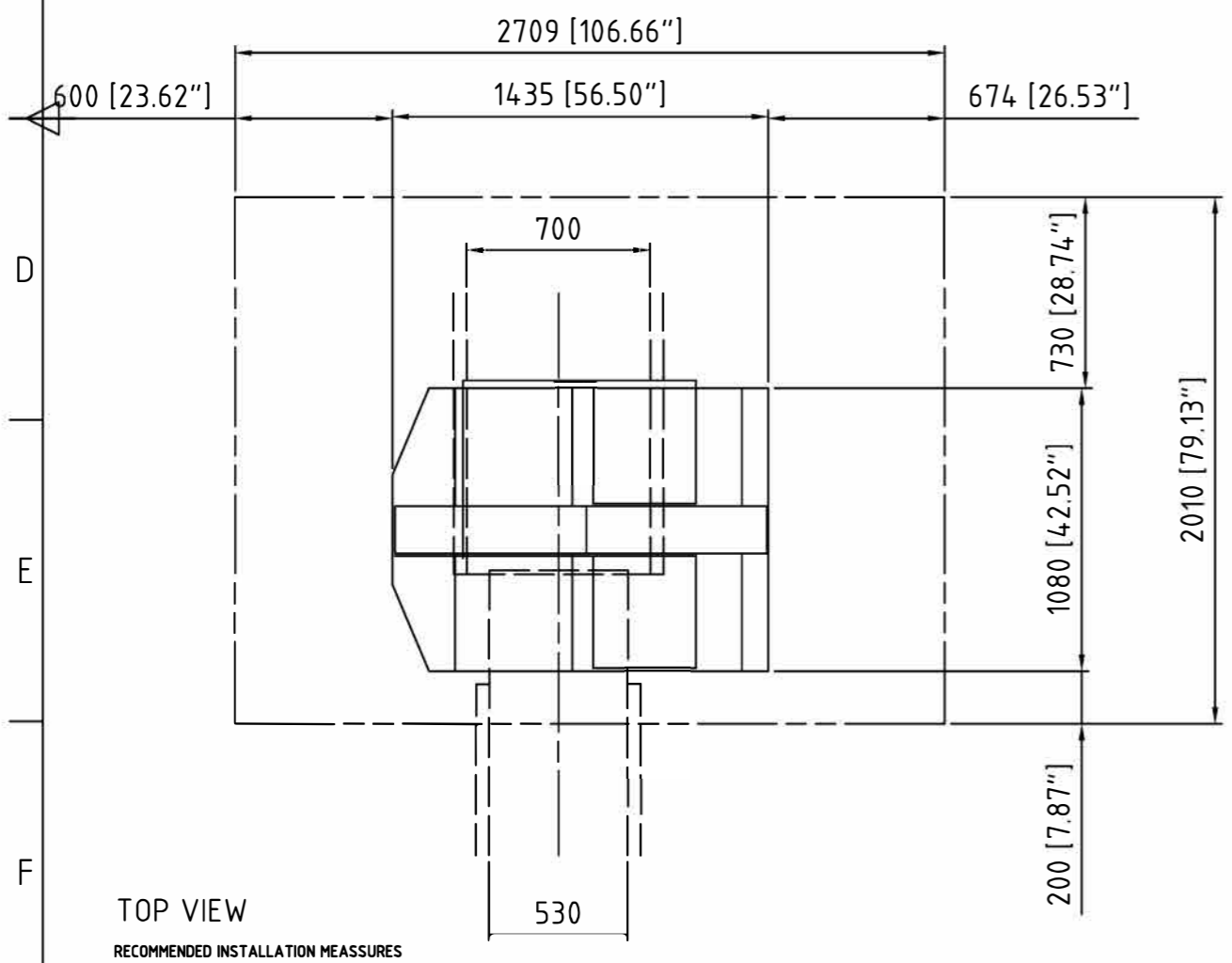
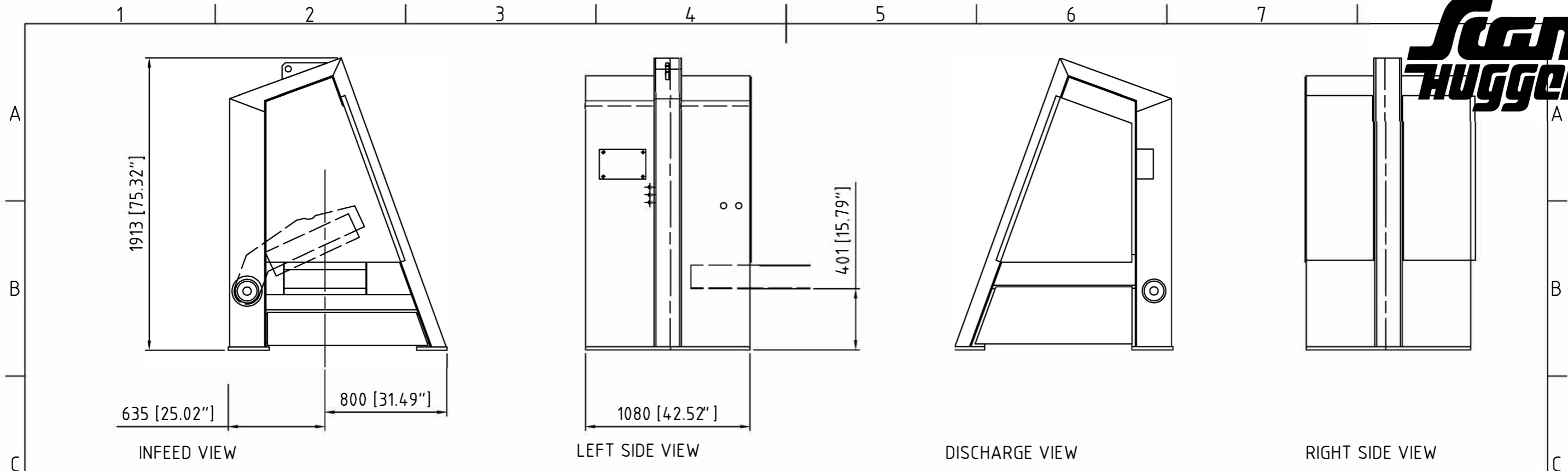
100 - 350 mm

CAPACITY

3 - 8 cbm/hr

WEIGHT

1500 kg



		Scale 1:25	Position -	Quantity -
		HK 55/10 GENERAL DRAWING		
Drawn Checked Standard		Date	Name	
SCANHUGGER WWW.SCANHUGGER.COM INFO@SCANHUGGER.COM		55100001		
State	Changes	Date	Name	Filename 5510001
				Page - Pg